

DEEP  
PAINTING

# CinePaint



Works on:

☒ Linux

☒ Mac

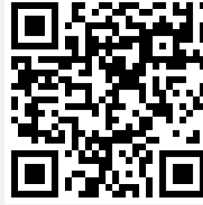
☐ Windows

CinePaint is a professional level bitmap editor specifically designed for film workflows. It's been used in major motion pictures including *Harry Potter and the Sorcerer's Stone* and *The Last Samurai*. CinePaint supports the Cineon, DPX, and OpenEXR formats among others. It includes a frame manager, onion-skinning, and HDR imaging support.

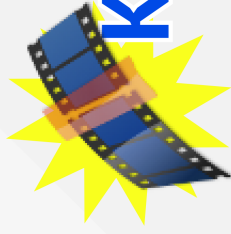
*Learn More...*

<http://www.cinepaint.org/>

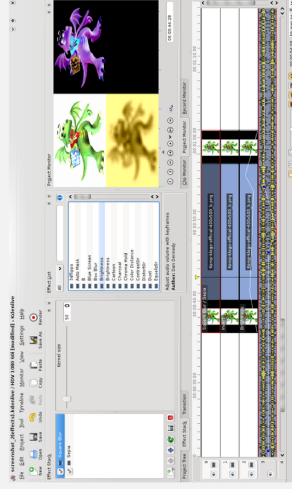
<http://www.cinepaint.org/more/>



NON-LINEAR  
EDITING



# Kdenlive



Works on:

☒ Linux

☒ Mac

☐ Windows

Kdenlive is a powerful, easy-to-use, non-linear, multi-track video editor. Kdenlive leverages FFmpeg to natively support a wide range of formats, so there's no need to import your resources. It supports custom profiles for resolutions, framerates, PAR and DAR. It comes with a wide range of effects and transitions, and supports custom effects and transitions.

*Learn More...*

<http://kdenlive.org/>

<http://www.kdenlive.org/tutorial>

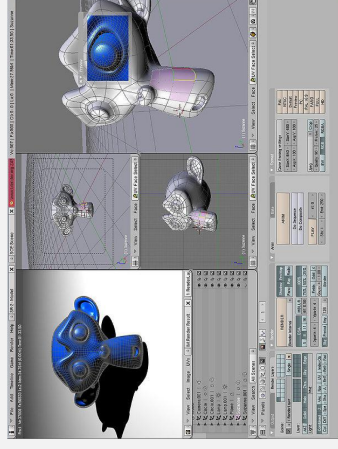
<http://en.wikibooks.org/wiki/Kdenlive>



3D  
ANIMATION



# Blender



Works on:

☒ Linux

☒ Mac

☒ Windows

Blender is a professional-quality 3D rendering and animation platform. It has a flexible and configurable ui, and supports rigging, modeling, physics and particle modeling, compositing, shading, and ray-tracing. It's been used as the primary platform for creating several open movies including *Big Buck Bunny* and *Sintel*. It also comes with a game engine for game development.

*Learn More...*

<http://blender.org>

<http://blenderunderground.com/>

